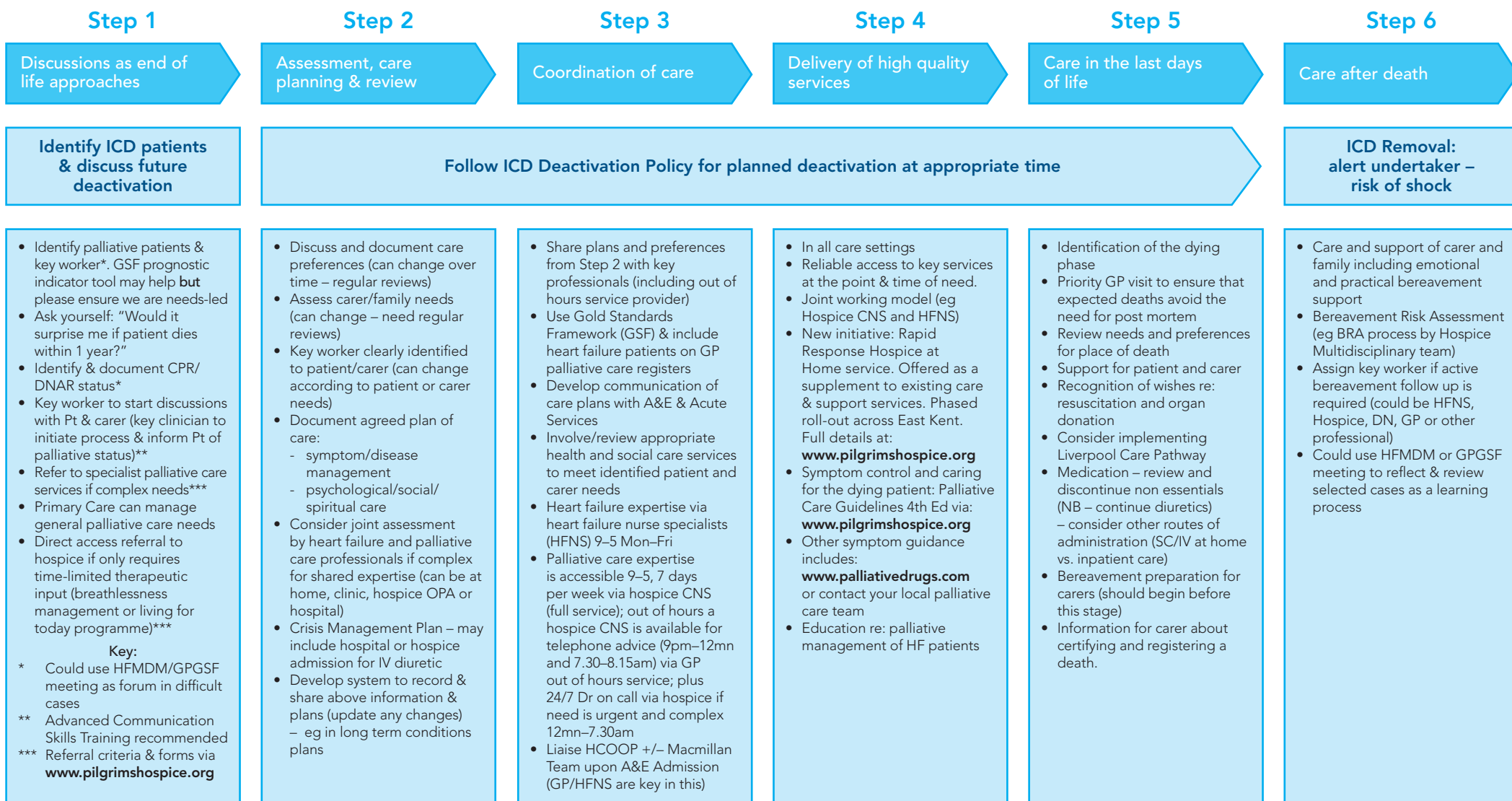


END OF LIFE CARE PATHWAY IN HEART FAILURE

Adapted for use in East Kent by Pilgrims Hospices and Kent Cardiovascular Network
 Note: Key worker to co-ordinate pathway action points where no professional is specified



Support for carers and families

Information for patients and carers – include pre-referral information for carers (eg 'Caring Counts' booklet)

Spiritual care services