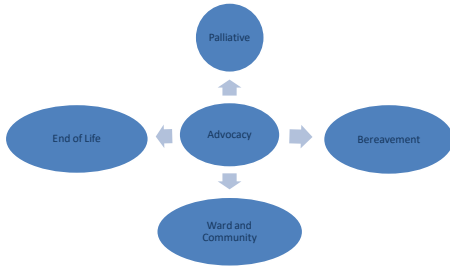


What is palliative care social work?



Palliative Care Social Work at Pilgrims

Social work is an integral part of the multi disciplinary team here at Pilgrims Hospices.

We offer an holistic service, ensuring interventions take account of the whole person as well as their family and those who are important to them.

We have the desire and ability to see people as whole people and not as a set of problems, to understand the connections of their lives and to seek to act on rather than ignore, the constraints and discriminations they experience in society.

We work across boundaries and are often the link between health and social care for both the people we work with and our professional colleagues.



Palliative Care Social Work at Pilgrims

- Support to find practical care at home or ongoing nursing or respite care
- Advice around housing, employment, finances and benefits, funding and grant applications
- Advocacy
- Safeguarding, mental capacity & deprivation of liberty safeguarding (DoLS)
- Carer wellbeing support groups
- Helping people prepare for the end of their lives through advanced care planning and psychosocial interventions
- Bereavement support services
- Family support including work with children
- Community engagement
- Complex, person centered holistic assessment of practical and psychological needs of patients and their families



Jim's Journey

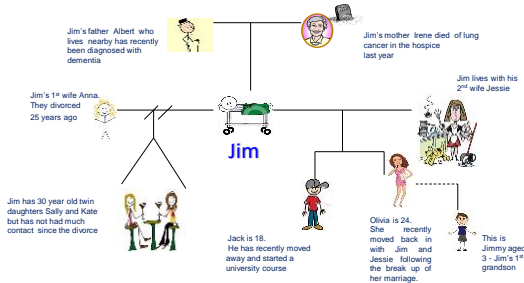
- Thinking of an holistic approach to care, think of the impact of Jim's situation on himself & members of his family.
- What are your thoughts?
- No solution required.....



Jim's Journey

You are a member of the care team looking after Jim & one morning he tells you he would like to get his affairs into order.

- What are your thoughts?
- No solution required.....



Introducing you to Jim's Genogram

