

“A gift left in a Will is an extraordinary act of kindness. No matter the size, all gifts make a huge difference. For example in a 24-hour period, **£270** could pay for all the medicine used across our 3 inpatient units, while **£1,400** could cover the entire cost of one of our community care teams. An even bigger gift could enable us to expand our services which would help us to reach people much sooner to diagnosis.”

Sue Sharp,
Director of Income Generation
and Marketing

For more information about leaving a gift in your Will please contact our gifts in Wills team on **01227 782062** or email giftsinwills@pilgrimshospices.org

www.pilgrimshospices.org/giftinwill



Leaving a gift in your Will



Find out more about our work and other ways you can support us.

Email: giftsinwills@pilgrimshospices.org

Call: 01227 782062

Visit: www.pilgrimshospices.org/giftinwill [f pilgrimshospices](https://www.facebook.com/pilgrimshospices) [@PilgrimsHospice](https://twitter.com/PilgrimsHospice)

Our hospices:

56 London Road, Canterbury,
Kent CT2 8JA

Hythe Road, Willesborough,
Ashford, Kent TN24 0NE


Ramsgate Road, Margate,
Kent CT9 4AD

Since opening in 1982 we have:

Opened
3 hospice sites in Canterbury, Thanet and Ashford



Opened
3 on-site gyms to empower people to live well in every moment



Cared for over
50,000 patients at home through our community teams

Been generously supported by over
200,000 people in east Kent

Admitted over
33,000 patients into our inpatient units



Relied on the dedication of over
1,500 volunteers each year to support our services & fundraising.



Welcomed over
45,000 family, friends and relatives into our hospices each year



Won prestigious awards for innovation and excellence



Provided bereavement support care for over
2,200 families and relatives each year



Pilgrims Hospices has been providing crucial, specialist end-of-life care to individuals and families throughout east Kent for more than 35 years

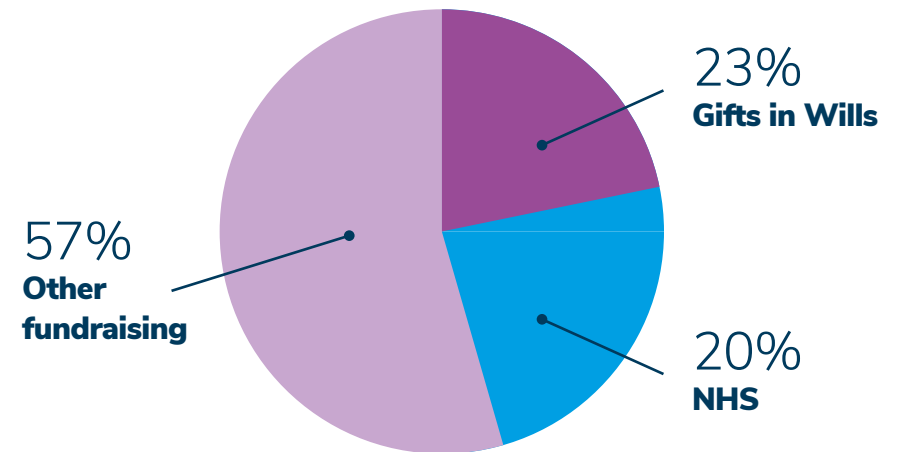
We know that having the right support at the right time can make a difference in enabling someone to live well until the very last moment of their life.

We care for more than 2,400 local patients each year free of charge; during the most challenging time in their lives.

Gifts in Wills are a crucial part of our income. They provide a quarter of our funding and support the care of 1 in 4 of all our patients.

We offer care and support through our Therapy Centres, in people's homes, in the community, in our inpatient units at Canterbury, Thanet and Ashford and through our 24-hour advice line.

Approximately* 20% of our funding comes from the government, the remaining 80% comes from the amazing generosity of our local community through donations, fundraising events, our shops, hospice lottery, and gifts in Wills.



*Figures based on a 3 year average from 2016-19 accounts

In one generation we have already achieved so much.
With your help, imagine what we can achieve for future generations.

Our vision

Our vision is of a community where people with a terminal illness are supported and empowered, together with their family and friends, to live well in mind and body, until the very last moment of their life.

By 2025 we hope to become a role model in east Kent for end-of-life integrated support, reaching people much sooner in their life, in turn this will help to achieve our vision.

The number of people aged 85 and older is set to double by 2030, and more people are approaching the end of their lives with chronic and complex conditions. The need for robust and relevant research in palliative care is crucial to enhance

the quality of life for patients who are faced with life-limiting illnesses.

We are specialists both in care and research. Being one of a small number of very active research hospices with a reputation of being high recruiters to national studies, working alongside the NIHR (National Institute for Health Research) we hope to achieve nationwide impact.

Research projects at Pilgrims Hospices (Pilgrims) have ranged from studying hydration, to treating fatigue in patients at the end-of-life. A gift in your Will could contribute to Pilgrims leading the way in new techniques and expertise, becoming leaders in the field of end-of-life care through new and developing research.

“We only have one chance to get it right in end-of-life care, and we absolutely need research to tell us which hospice based interventions are effective, how they work, which models of care are best and whether they are both effective and cost-efficient.”

Dr Andrew Thorn, Medical Director and Consultant in Palliative Medicine at Pilgrims Hospices



Investing in our future

Here at Pilgrims Hospices we are dedicated to improving awareness surrounding death and dying.

We not only provide specialist end-of-life care supporting a population of over 750,000 people, we are spearheading a social change in east Kent, empowering people to talk about and plan for their death, so they can live well in every moment.

With an ageing population in our care area and annual death rates expected to rise, the need for crucial, end-of-life services is going to increase. Its important we prepare for the future.

With the funding gap slowly widening, we rely on supporters like you to secure the care needed for future generations.

Pilgrims are advocates for the living and support people diagnosed with incurable illnesses.

To achieve our target of becoming role models in east Kent for end-of-life integrated support by 2025, we need to increase our annual net income by 7%.

Gifts in Wills play a vital part in our ability to continue caring for our local community. Should you choose to leave a gift to Pilgrims in your Will, you will be helping to ensure future care for people across east Kent.



Refurbished Canterbury patient and family lounge



The difference **you** could make

We see acts of generosity every year. In 2017 we received a gift in the Will of Verity Judge. Verity came to Pilgrims for help in coping with a life-limiting illness.

Verity praised the care and the excellent clinical facilities but she wanted to help us make the experience for visitors even better. The old patient and family lounge in Canterbury was very tired and had no facilities for families. Thanks to her gift, this have been totally transformed.



“Thanks to Verity’s generosity and vision, and to the kindness of her family working closely with us to realise these renovations, this room now brings a real feeling of home comforts. Every moment together matters when someone in your family is seriously ill. The way a space looks and is organised makes a huge difference to comfort and wellbeing. This is just one in a series of projects to broaden the support we offer.”

Sue Sharp, Director of Income Generation and Marketing

Leaving a gift in your Will is simple...

If you are considering leaving a gift in your Will to Pilgrims Hospices, we would like to take this opportunity to give you our most sincere thanks for your generosity.

By deciding to remember us in your Will, it will cost you nothing now but will help more than 200 Pilgrims nurses and therapists continue to give expert care and support to people with terminal illnesses across east Kent. Gifts in Wills support the care of more than 1 in 4 of our patients.

There are different ways you can arrange a gift in your Will, a solicitor will be able to guide you as to your preference and advise you on other things such as inheritance tax.

It is also possible to specify in your Will if you would like your gift to be restricted to the care at one of our hospices. Please get in touch if you would like more information on this

Did you know...?
You can leave us just 1% in your Will so that those people who are closest to you receive 99%

Types of Gifts

Residuary legacy

This is a percentage of, or perhaps the balance of your estate once all other payments have been made. It won't lose its value over time and if you leave a proportion to Pilgrims you can still ensure other beneficiaries are looked after.

Pecuniary legacy

This is a gift of a fixed amount of money. The gift's value may decrease over time, although this can be avoided through an index-linked Pecuniary legacy.

Specific legacy

This is a gift of a specific item, such as a personal possession, a property or shares. Through our experienced retail team we have the expertise to achieve the best price for any gift kindly donated.

MAKE A WILL MONTH FEBRUARY

No matter what type of gift, how big or small, the generosity in your Will is a simple way to provide for the future...

Each year in February we run Make a Will Month where solicitor firms across east Kent very kindly donate their time and expertise completely free of charge to write Wills, in return for a donation to the hospice.

For more information on Make a Will Month or how to make a Will outside of February please contact our gifts in Wills team on **01227 782062** or email **giftsinwills@pilgrimshospices.org**



Why Shirley's leaving a gift in her Will

“My first experience of Pilgrims was in 1985 when my mum was cared for at the Canterbury hospice. Many years later, when my husband Gordon was diagnosed with cancer, it was important to me that he received the same incredible support from Pilgrims Hospices.

He attended the Pilgrims Therapy Centre in Ashford as an outpatient for over a year and when he eventually came into Pilgrims in Ashford for his last few weeks it was so peaceful, as he would have wished he was surrounded by his family at the end.

As we'd spent so long coming to Pilgrims it felt like being part of a family, I was quite bereft without it after he'd gone, so I decided to volunteer as a gardener at the Ashford hospice. Once a week you will find me in the 'wild' garden pottering around keeping the gardens a beautiful space for everyone to enjoy.

Gordon and I always spoke about wanting to leave some money to the hospice in our Will. This is why when making my new Will, and after speaking



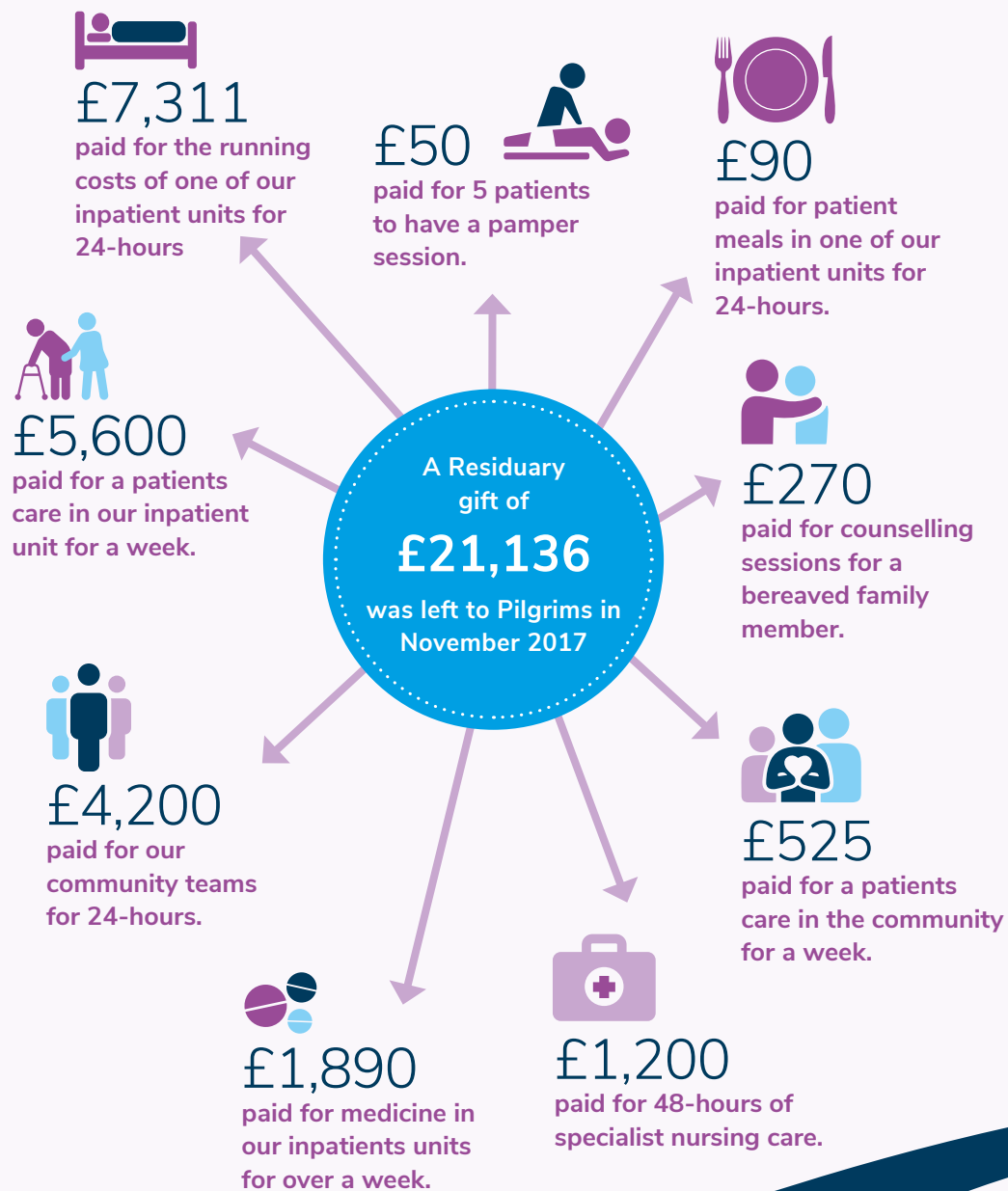
“I am leaving a gift to the hospice to ensure this incredible service continues to be here for future generations, for my children and grandchildren”

to my family, I split my estate six ways between my five children and Pilgrims.

Leaving a gift in my Will to the hospice is as important to me as it was to my husband. I could never have cared for either my husband or my mum in the way the hospice cared for them. I'm leaving a gift to the hospice to ensure that this incredible service continues to be here for future generations, for my children and grandchildren.”

Shirley Johnston

How a gift in a Will has made a difference



Their futures first...

When making a Will it is vital you put your family, friends and loved ones first. Once you have provided for them, leaving a little of what is left to Pilgrims Hospices would be very much appreciated. Discussing your intentions with them first is important as your decision could affect them.

We will never ask you to tell us your intentions, but if you choose to, then we are able to say *thank you!*

Our promises if you do choose to leave a legacy:

1. We promise not to intrude on your privacy about this way of giving
2. We will never ask you the size or type of legacy if you decide to support our work in this way
3. We recognise that those closest to you, such as family and friends, come first in your Will
4. We will never ask you to tell us your intentions, but if you choose to, then we are able to say thank you!
5. We understand that personal circumstances change and there might be a time when you must take Pilgrims Hospices out of your Will
6. We promise to use your gift wisely for the benefit of future generations

We fully appreciate how important this decision is for you and your family, so we are more than happy to discuss this in complete confidence whenever you are ready. If you wish to speak to someone, please contact our gifts in Wills team on **01227 782062**.

The contents of this document are not intended to constitute legal advice. If you are considering leaving a gift in your Will to Pilgrims Hospices, we suggest you seek your own professional advice.