

Are you a family carer of someone with motor neurone disease?

A virtual peer-to-peer support programme for informal caregivers of individuals with motor neurone disease at risk of becoming or currently technology-dependent: randomised controlled trial

We are looking for **family/informal carers** of someone with **motor neurone disease (MND)** for a **research study of online peer support**.

Peer support is the provision of emotional and informational support from people who have experienced the same health problem and have similar characteristics as those receiving support.

We are using an easy to use App to deliver a 12 week peer-to-peer support programme. We will match participants with a peer supporter. Peer supporters will have had a similar experience and also have had training as a volunteer from the MND Association or Marie Curie.

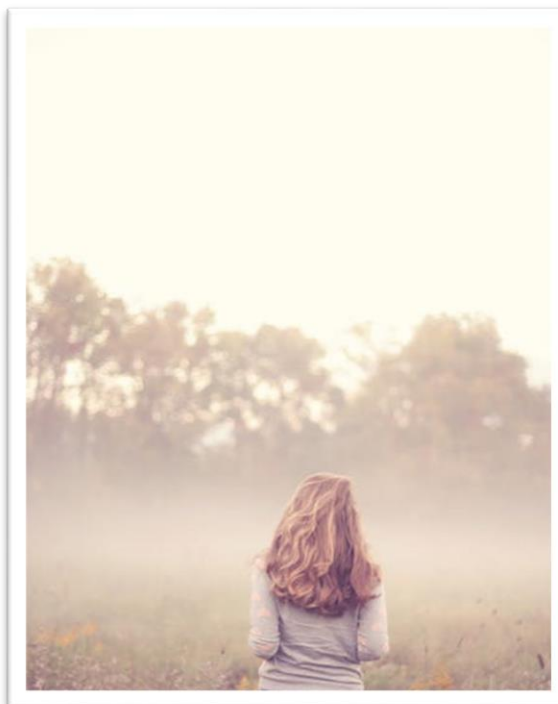
Participants will be randomised to receive the 12 week programme or usual supports.

Are you eligible?

- If you are 18 or over
- A family/informal carer of someone with MND who is being considered for or receiving assistance for breathing, or for coughing or receiving feeding via a tube
- Able to speak and read English
- Has access to a computer, tablet, or smartphone and the internet

Funding & Sponsorship

This trial is funded by Marie Curie and the Motor Neurone Disease Association.



If you would like to find out more, email the study team:

Rebecca Rogers or Thilipan Thaventhiran

peersupport@kcl.ac.uk

The study is co-sponsored by King's College London and Guy's & St Thomas' NHS Foundation Trust

IRAS 292922 Version 1.1 04Apr 2022